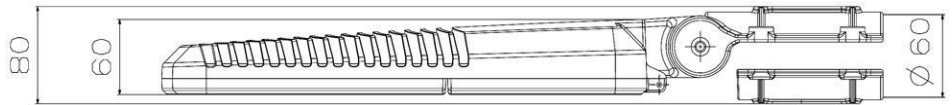
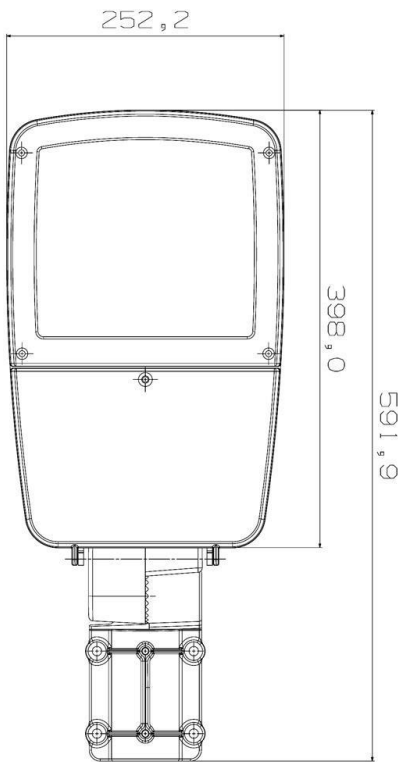




IP 66
Ta: 50°



Applications :

Roads and Highways
Urban Roads and Street Lighting
Park & Garden Lighting
Pedestrian Road Lighting
Wide Area Lighting

Driver Protections :

Open Circuits
Short Circuits
Low & High Voltage
Soft Start
Thermal Protection

- ENEC
- EN 60598-2-3
- KEMA-KEUR
- CB
- UL
- ISO 9001
- ISO 14001
- OHSAS 18001
- CE

CERTIFICATES :

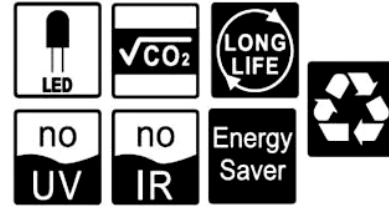


Test Report issued under the responsibility of :





36 LED



TECHNICAL SPECIFICATION

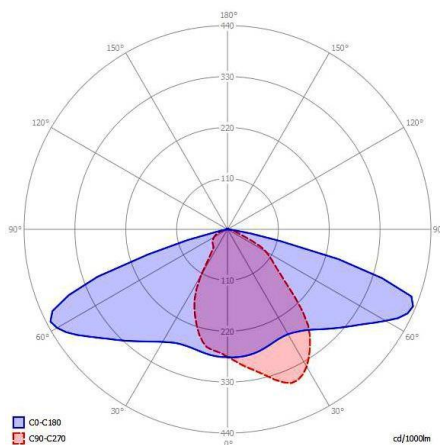
Model No:	COMM-36-A80CS
Power	80W
Input Voltage	100-240V AC 50/60 Hz
Led Pieces	High Power Led 36
Lumen	8391 Lumen
Color Temperature	4000-5000-6500 Kelvin
Led Life (LM80)	>60.000 Hours
Working Temperature	-30 / +55 C°
Lighting Angel	130° H / 60° V
IP Class	IP66
Body Material	Aluminum Injection
Front Side	4mm Tempered Glass
Adj. Arm Angle	0-85°
Arm Diameter	4-6 cm
Weight	6 kg
Dimensions	25 x 60 x 6 cm cm

High Power Optional
LED Brands

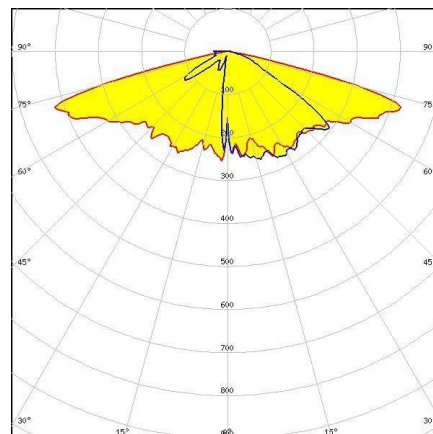


LIGHTING CURVE

TYPE II



TYPE III





POWER ANALYZER RESULT



OPTIONAL DRIVER



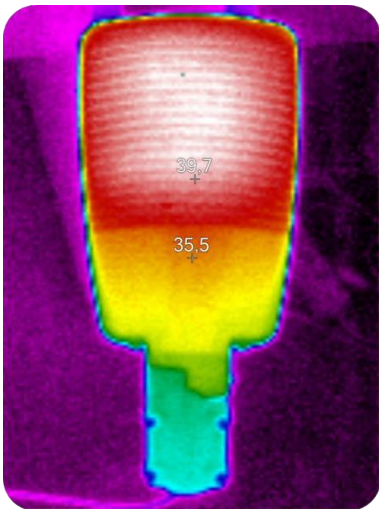
Ta: 50°

CLASS I

Glass IK08 IK10 Body

PFC PFC FUNCTION

BODY THERMAL RESULT



- DIMM Options :
- DALI
 - StepDIMM
 - SmartTimer Dimming
 - 0-10V

- Hardware Options
- Optional High Power LED Brands
 - Optional Led Driver Brands
 - External Surge Protection
 - RAL XXXX

RAL 7035 RAL 7040 RAL 9005