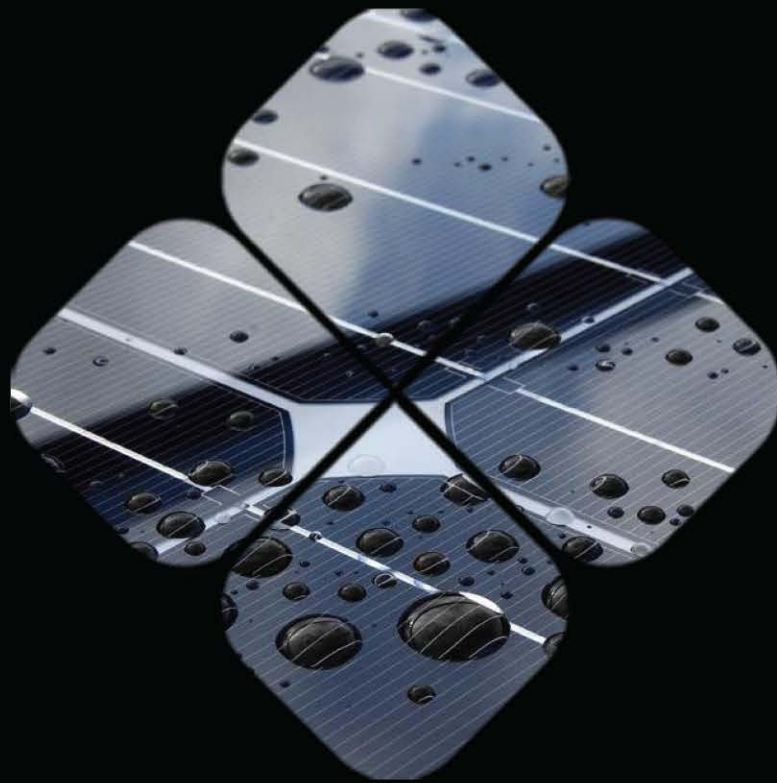


**symtechsolar**  
HELPING YOU HARVEST CLEAN ENERGY



**MASTERS** OF THE PV KIT



## About Symtech Solar

Symtech Solar is a renewable energy company that delivers unique and complete solar energy products and solutions. Our mission is to simplify solar energy by offering pre-configured and designed solar kits. Promoting and providing a clean means of energy independence for individuals, families & businesses.

Committed to technical design, engineering, and sourcing Symtech Solar Group strategically located its company headquarters in Shanghai CN allowing it to have a more competitive and efficient manufacturing platform for both production and design.

Our customer base is made up of end users (whether individuals, businesses, or government entities), installers, wholesalers and distributors, all of whom benefit from the pre-designed Solar Kit, or 'all in a box' concept. Our added value is created by offering pre-packaged/designed solar energy systems that reduce both the time and money required in the design, purchasing, and logistics of solar energy systems.

Product dimensions and physical appearance in this catalog are nominal and are provided for the convenience of our customers. Symtech Solar Group reserves the right to make product changes from time to time, without prior notification, which may change the dimensions and/or physical appearance shown.

We therefore recommend you consult a Symtech Solar sales representative before its purchase.

© 2014 Symtech Solar Group

## TABLE OF CONTENTS

|    |                     |   |
|----|---------------------|---|
| 03 | On-Grid             | Residential PV Kits                       |
| 05 | On-Grid             | Commercial PV Kits                        |
| 07 | Off-Grid            | Residential PV Kits                       |
| 09 | Off-Grid            | Micro Home PV Kits                        |
| 11 | Solar Water Pumping | Solar Garden Pump - Solar Jack Pump       |
| 13 | Solar Water Pumping | Solar Queen Pump - Solar King Pump        |
| 15 | Telecom             | Hybrid Solar Wind - Solar Remote Telecom  |
| 17 | Portable Solar      | Solar UFO - Solar Cell Mate               |
| 19 | Portable Solar      | Solar Smart Light - Solar Base Camp       |
| 21 | Portable Solar      | Solar Flex Mate - Solar Mobile Mate       |
| 23 | Portable Solar      | Solar Vehicle Mate - Solar Remote Freezer |
| 25 | BOS                 | AC/DC Disconnects                         |
| 27 | BOS                 | Connectors and PV Wire                    |
| 29 | LED Lighting        | Bulbs, Spotlights, Tubes, High Bays       |

# On-Grid

## Residential PV Kits



### Superior Protection & Customization

Symtech PV kits rely on state of the art Mono or Polycrystalline modules and inverter technology. Simplified packaging allows for easy shipping and receiving to installation site. All necessary hardware and design instructions for installing the PV systems are included in the PV System Kit.

### Features

- Complete system kit shipped in one box
- Fast installation
- Plug and play configuration
- UL and TUV Listed Modules and Inverters
- Optimized system footprint
- AC & DC disconnects
- Roof Mount System

### Options

- Mono or Polycrystalline PV modules (Black/White)
- Flat/Pitched/Ground Mounting
- Wireless Monitoring
- 1.5kW, 2kW, 3kW, 4kW, and 5kW



All Items shipped in 1 box

### Shipping Configuration

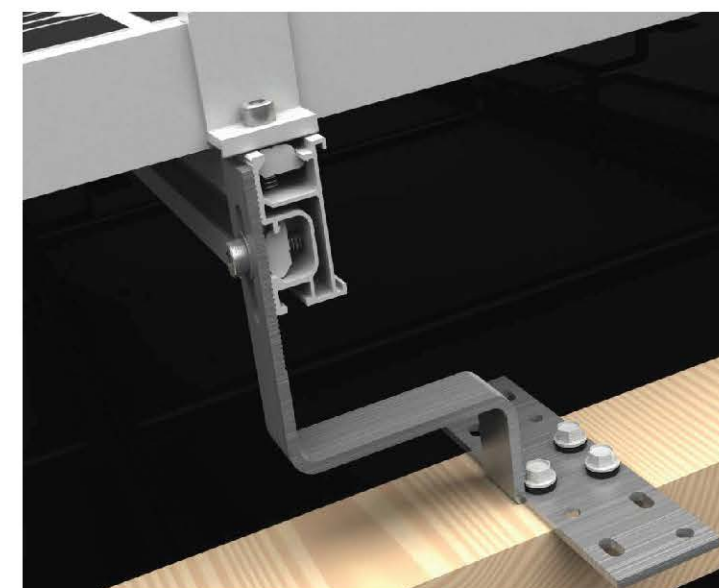


Packaging Solution

Complete system kit with Plug and Play configuration

### Mounting System Solution

Symtech offers high quality anodized Al-6005T5 mounting systems that are suitable for any roof type. Our mounting systems will reduce both man hours and installation costs. They are easy to install and provide adequate wind and load protection. Offered for a variety of different roof styles.



Wood Roof Connector

### Technical Characteristics

| Product Name                    | HOME SAVER            | HOME SAVER + | HOME PRO | HOME PRO + | HOME RUN   |
|---------------------------------|-----------------------|--------------|----------|------------|------------|
| Part #                          | STSGT-1.5             | STSGT-2      | STSGT-3  | STSGT-4    | STSGT-5    |
| System Size                     | 1.5kW                 | 2kW          | 3kW      | 4kW        | 5kW        |
| # of Modules                    | 6                     | 8            | 12       | 16         | 20         |
| Inverter Size                   | 1.5                   | 2            | 3        | 4          | 5          |
| AC/DC Disconnect                | 1/1                   | 1/1          | 1/1      | 1/2        | 1/2        |
| PV Wire Harness (4mm 1000V)     | 2                     | 2            | 2        | 4          | 4          |
| Grounding Lugs                  | 6                     | 8            | 12       | 16         | 20         |
| PV Module Orientation           | Landscape or Portrait |              |          |            |            |
| PV Array Surface Area (m2)      | 11                    | 13           | 20       | 26         | 33         |
| PV Array Weight (kg)            | 120                   | 160          | 240      | 320        | 400        |
| Projected yearly output (kWh/y) | 1642.5                | 2190         | 3285     | 4380       | 5475       |
| PV Kit Weight (kg)              | 230                   | 280          | 380      | 480        | 580        |
| Shipping Size (W/L/H) (m)       | 0.5/1.75/1            | 0.5/1.75/1   | 1/1.75/1 | 1/1.75/1   | 1.2/1.75/1 |



PV Module selection

### 5kWp Residential PV Kit



# On-Grid

## Commercial PV Kits

### Superior Protection & Customization

Symtech PV system kits rely on state of the art Mono or Polycrystalline modules and inverter technology. Simplified packaging allows for easy shipping and receiving to installation site. All necessary hardware and design instructions for installing the PV systems are included in the PV System Kit.



Complete system kit with Plug and Play configuration

### Commercial PV Kits

Symtech commercial PV Kits are suitable for larger available area size. They are the perfect solution for middle size projects which have bigger electricity demand than normal single houses. It's simplified packaging solution has made them top favorite items for customers looking to save energy costs.

### Features

- Simplified packaged solution
- Fast installation
- Plug and play configuration
- UL and TUV Listed Modules and Inverters
- Optimized system footprint
- AC & DC disconnects
- Roof Mount System/Ground Mount

### Options

- Mono or Polycrystalline PV modules (Black/White)
- Flat/Pitched/Ground Mounting
- Wireless Monitoring
- 10kW, 20kW, and 45kW



45kWp Flat Roof PV

### Shipping Configuration



Packaging Solution



45kWp PV Array

### Technical Characteristics

| Product Name                            | Arena                 | Stadium   | Coliseum  |
|---|-----------------------|-----------|-----------|
| Part #                                  | STSGTC-10             | STSGTC-20 | STSGTC-45 |
| System Size                             | 10kW                  | 20kW      | 45kW      |
| # of Modules                            | 40                    | 80        | 180       |
| Inverter Size                           | 2 x 5                 | 2 x 10    | 3 x 15    |
| AC/DC Disconnect                        | 2/1                   | 4/1       | 6/3       |
| PV Wire Spool 4mm (m)                   | 120                   | 225       | 500       |
| Grounding Lugs                          | 40                    | 80        | 180       |
| PV Module Orientation                   | Landscape or Portrait |           |           |
| PV Array Surface Area (m <sup>2</sup> ) | 80                    | 160       | 360       |
| PV Array Weight (kg)                    | 1000                  | 2000      | 4500      |
| PV Kit Weight (kg)                      | 1225                  | 2355      | 5270      |
| Projected yearly output (kWh/y)         | 10950                 | 21900     | 49275     |



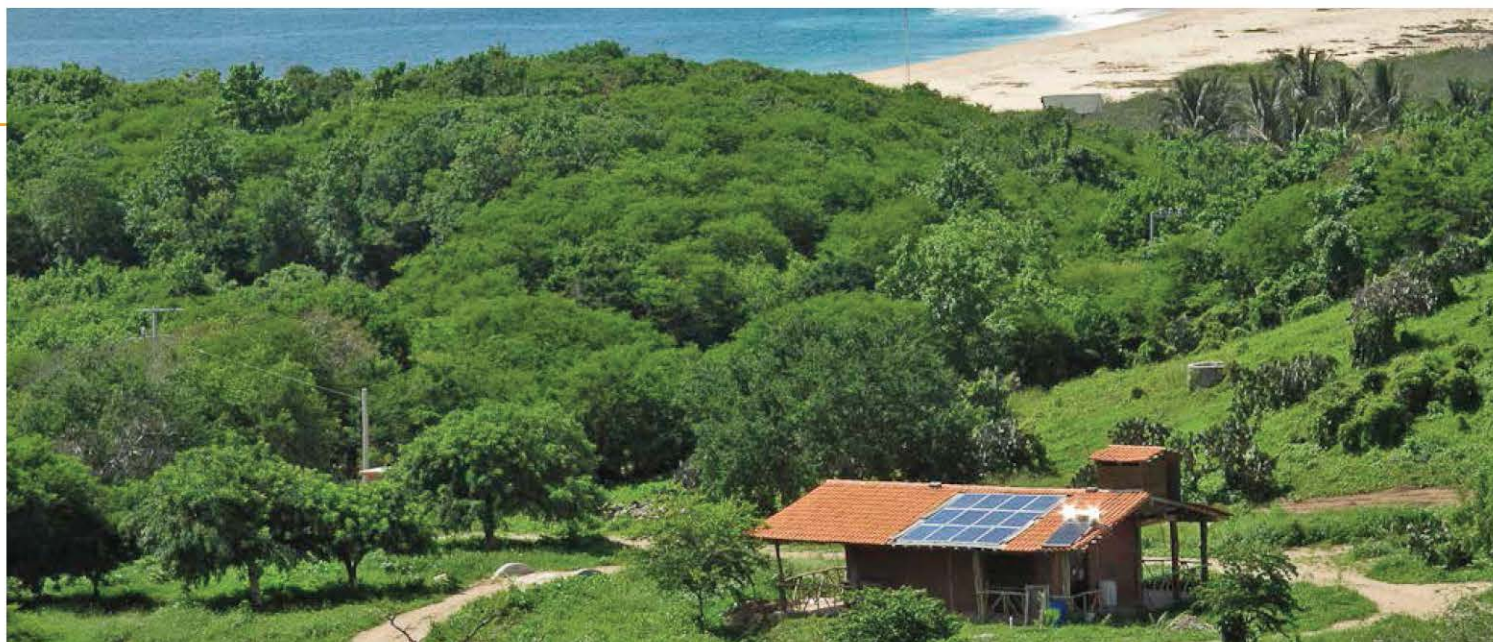
PV Module selection

20kWp PV Array



# Off-Grid

## Residential PV Kits



Complete system kit with Plug and Play configuration

### Grid Independent

Off-Grid PV Kits are designed for those who either have limited access to the grid or for those who want to be totally independent from it. These systems include a Smart Energy Management Unit (SEMU) and a battery bank that balances the energy loads with the PV array.

### Stand Alone Systems

Symtech PV system kits rely on state of the art Mono or Polycrystalline modules and inverter technology. Simplified packaging allows for easy shipping and receiving to installation site. All necessary hardware and design instructions for installing the PV systems are included in the PV System Kit.

### Features

- Simplified packaged solution
- Fast installation
- Plug and play configuration
- UL and TUV Listed Modules and Inverters
- Battery Bank
- AC & DC disconnects
- Roof Mount System

### Options

- Mono or Polycrystalline PV modules (Black/White)
- Flat/Pitched/Ground Mounting
- Wireless Monitoring
- 2kW, 3kW and 6kW



Simplified Packing Solution

### Off Grid Energy Management Unit



Flex Power One



2kW Off-Grid PV

Off-Grid Residential



## Technical Characteristics

| Product Name               | Remote Home Saver     | Remote Home Pro | Remote Home Run |
|----------------------------|-----------------------|-----------------|-----------------|
| Part #                     | STSOG-2               | STSOG-3         | STSOG-6         |
| System Size                | 2kW                   | 3kW             | 6kW             |
| # of Modules               | 8                     | 12              | 24              |
| Inverter Size              | 2                     | 3               | 6               |
| PV Wire Harness 4mm/20m    | 4                     | 8               | 16              |
| Grounding Lugs             | 8                     | 12              | 24              |
| PV Module Orientation      | Landscape or Portrait |                 |                 |
| PV Array Surface Area (m2) | 16                    | 24              | 48              |
| PV Array Weight (kg)       | 200                   | 295             | 600             |
| Battery Bank               | 24V 450Ah             | 48V 400Ah       | 48V 800Ah       |
| AC Output                  | 120v/230V             | 120v/230V       | 120v/230V       |



PV Module selection

# Off-Grid

## Micro Home

### Stand Alone Systems

Symtech PV system kits rely on state of the art Mono or Polycrystalline modules and inverter technology. Simplified packaging allows for easy shipping and receiving to installation site. All necessary hardware and design instructions for installing the PV systems are included in the PV System Kit.



### Features

- Simplified packaged solution
- Fast installation
- Plug and play configuration
- UL and TUV Listed Modules and Inverters
- Optimized system footprint
- AC & DC disconnects
- Roof Mount System

### Options

- Mono or Polycrystalline PV modules (Black/White)
- Flat/Pitched/Ground Mounting
- 0.5kW - 1kW

### Technical Characteristics

| Product Name                 | Remote Micro Home     | Remote Micro Home + |
|------------------------------|-----------------------|---------------------|
| Part #                       | STSOG-500             | STSOG-1000          |
| System Size                  | 500W                  | 1000W               |
| # of Modules                 | 2                     | 4                   |
| Pure Sine Wave Inverter Size | 500                   | 1000                |
| AC/DC Disconnect             | 1/1                   | 1/1                 |
| PV Wire Harness (4mm 1000V)  | 2                     | 2                   |
| Grounding Lugs               | 2                     | 4                   |
| Orientation                  | Landscape or Portrait |                     |
| PV Array Surface Area (m2)   | 4                     | 8                   |
| PV Array Weight (kg)         | 40                    | 80                  |
| Battery Bank                 | 24V 200Ah             | 24V 400Ah           |
| AC Output                    | 120V/230V             | 120V/230V           |



Simplified Packing Solution

### EMU Configuration



Off-Grid Inverter / Charge Controller



PV Module selection

Complete system kit with Plug and Play configuration

### Grid Independent

The Remote Micro Home systems from Symtech Solar are small off-grid solutions for the off-grid residential market. They are designed for smaller load requirements. Available in different configurations.



Off-Grid Outdoor Cabin

0.5kW Off-Grid PV



# Solar Water Pumping

## SOLAR Garden Pump 0.25 kW

### Product Details

The Solar Garden Pump is the smallest solar water pumping kit offered by Symtech. The STSWP-1 provides a complete off-grid independent water pump system that's simple to use and easy to install. pump float switch makes control simple and worry free. Perfect for small irrigation projects and ponds.

### Features & Benefits

- Ground Mount
- Easy installation
- Simple design
- Float switch for better control
- Brass & stainless steel design
- Operates autonomously

### Technical Information

|                             | SOLAR MODULE | WATER PUMP | CONTROLLER |
|-----------------------------|--------------|------------|------------|
| Part # STSWP-1              |              |            |            |
| Power (W)                   | 250          | 150        | 200        |
| # of Modules                | 1            |            |            |
| Space Required (m2)         |              | 2          |            |
| Weight (kg)                 |              | 54         |            |
| DC Output Voltage (V)       | 30.7         | 24         | 24         |
| Water Head Max (m)          |              | 30         |            |
| Water Flow Average (m3/day) |              | 2-3        |            |



### Typical Applications

- Gardens
- Ponds
- Livestock
- Aquaculture
- Water storage



## SOLAR Pump Jack 1 kW

### Product Details

The Solar Pump Jack is the smallest commercial "all in-one" solar water pumping kit offered by Symtech. The STSWP-2 utilizes a 3 phase AC pumping system for enhanced efficiency and increased pump life, aluminum mounting system and mono PV technology. The ideal solution for light irrigation projects that want to utilize clean renewable energy from the sun.

### Typical Applications

- Livestock watering
- Irrigation ponds
- Remote communities
- Aquaculture
- Water storage

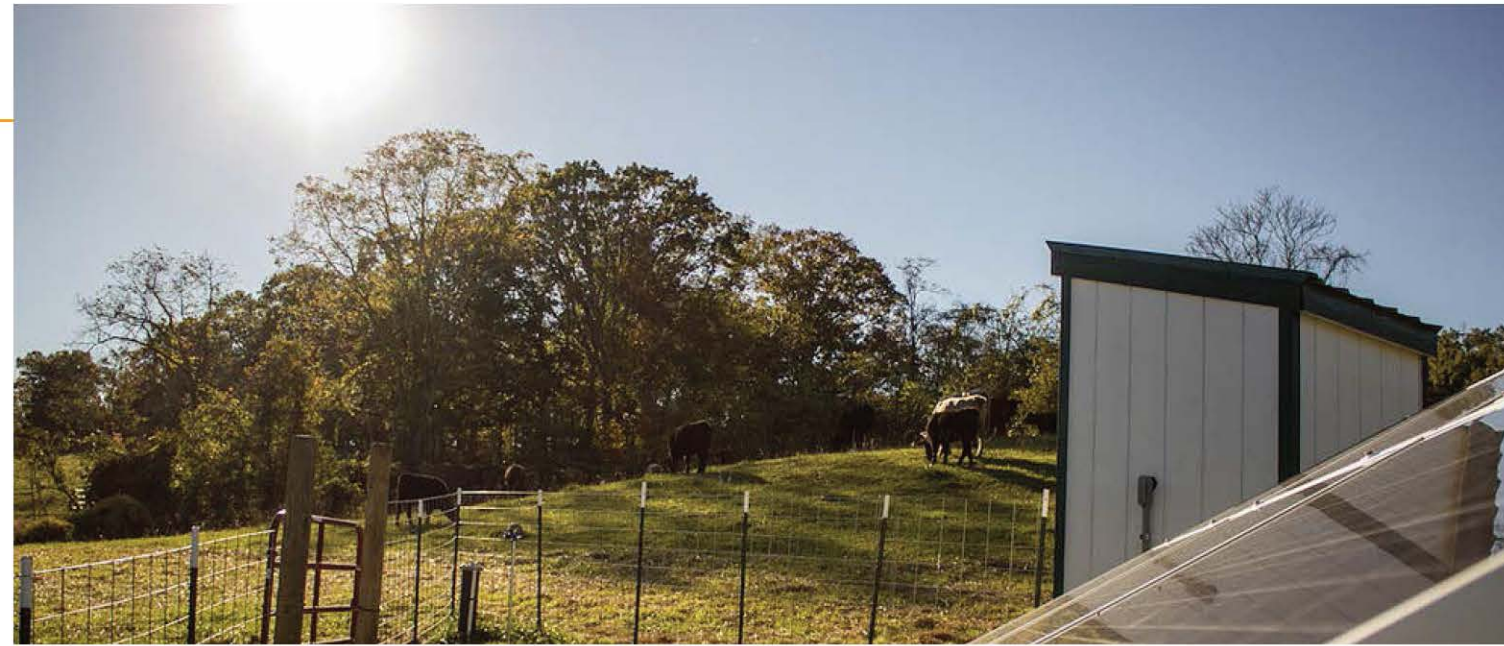
### Features & Benefits

- Ground Mount
- Easy installation
- Eliminates the need for diesel generators
- Float switch for better control
- MPPT Max Power Point Tracking
- Operates autonomously

### Technical Information

|                             | SOLAR MODULE | WATER PUMP | CONTROLLER |
|-----------------------------|--------------|------------|------------|
| Part # STSWP-2              |              |            |            |
| Power (W)                   | 1000         | 370        | 750        |
| # of Modules                | 4            |            |            |
| Space Required (m2)         |              | 6-7        |            |
| Weight (kg)                 |              | 115        |            |
| DC Output Voltage (V)       | 18           | 220        | 280 - 350  |
| Water Head Range (m)        |              | 20 - 29    |            |
| Water Flow Average (m3/day) |              | 20 - 10    |            |





### Typical Applications

- Livestock watering
- Irrigation ponds
- Remote communities
- Aquaculture and farming
- Water storage

### Features & Benefits

- Ground Mount
- Easy installation
- Eliminates the need for diesel generators
- Float switch for better control
- MPPT Max Power Point Tracking
- Quiet operation

### Technical Information

|  | SOLAR MODULE | WATER PUMP | CONTROLLER |
|--|--------------|------------|------------|
| Part # STSWP-4                           |              |            |            |
| Power (W)                                | 8500         | 5500       | 7500       |
| # of Modules                             | 34           |            |            |
| Space Required (m <sup>2</sup> )         |              | 60         |            |
| Weight (kg)                              |              | 1050       |            |
| DC Output Voltage (V)                    | 30.7         | 220        | 500 - 600  |
| Water Head Range (m)                     |              | 44 - 67    |            |
| Water Flow Average (m <sup>3</sup> /day) |              | 100 - 60   |            |



## SOLAR Pump King 8.5 kW

### Product Details

The Solar Pumping King is the largest off-grid solar energy water pumping solution from Symtech. Ideal for irrigation projects and municipalities looking for a cheaper and more environmentally friendly pumping system.

### Typical Applications

- Livestock watering
- Irrigation ponds
- Remote communities
- Aquaculture and farming
- Water storage

### Features & Benefits

|  | SOLAR MODULE | WATER PUMP | CONTROLLER |
|--|--------------|------------|------------|
| Part # STSWP-3                           |              |            |            |
| Power (W)                                | 2500         | 1500       | 2200       |
| # of Modules                             | 10           |            |            |
| Space Required (m <sup>2</sup> )         |              | 20         |            |
| Weight (kg)                              |              | 345        |            |
| DC Output Voltage (V)                    | 30.7         | 220        | 280 - 350  |
| Water Head Range (m)                     |              | 27 - 43    |            |
| Water Flow Average (m <sup>3</sup> /day) |              | 40 - 20    |            |



# Solar Water Pumping

## SOLAR Pump Queen 2.5 kW

### Product Details

The Solar Pumping Queen is designed for mid sized water irrigation projects and is the perfect solution for the livestock industry or areas that rely on a dedicated water supply that utilizes pumping. The ideal solution for saving precious resources by utilizing unlimited solar energy.

### Features & Benefits

- Ground Mount
- Easy installation
- Eliminates the need for diesel generators
- Float switch for better control
- MPPT Max Power Point Tracking
- Operates autonomously

### Technical Information

|  | SOLAR MODULE | WATER PUMP | CONTROLLER |
|--|--------------|------------|------------|
| Part # STSWP-3                           |              |            |            |
| Power (W)                                | 2500         | 1500       | 2200       |
| # of Modules                             | 10           |            |            |
| Space Required (m <sup>2</sup> )         |              | 20         |            |
| Weight (kg)                              |              | 345        |            |
| DC Output Voltage (V)                    | 30.7         | 220        | 280 - 350  |
| Water Head Range (m)                     |              | 27 - 43    |            |
| Water Flow Average (m <sup>3</sup> /day) |              | 40 - 20    |            |





# Telecom

## HYBRID Solar Wind 3.5 kW

### Product Details

The Remote Dual Gene hybrid solar wind kit from Symtech includes all the products required for an efficient and reliable 24 hour remote power source. Utilizing state of the art technology in both solar PV and Wind Power this kit offers dual energy generation units.



## SOLAR Remote Telecom

### Product Details

The remote Telecom solar kit from Symtech includes all the products required for an efficient and reliable 24 hour remote power source. Designed around an optimal system footprint with expandable storage options to fit a variety of different energy requirements.

### Solar

- Mono or Polycrystalline PV modules (Black/White)
- Flat/Pitched/Ground Mounting options
- Wireless monitoring

### Wind

- Permanent magnet synchronous generator
- Nylon composite blades
- Independent EMU



### Benefits

- Low Maintenance
- Excellent performance
- Cut diesel or imported fuel costs
- Dramatically cut installation time

### Options

- Mono or Polycrystalline PV modules (Black/White)
- Flat/Pitched/Ground Mounting
- Wireless monitoring
- 2kW - 3kW - 6kW



### Technical Information

| Product Name          | Remote Dual Gene |                  |                  |              |
|-----------------------|------------------|------------------|------------------|--------------|
| Part # STSHT-3.5      | SOLAR MODULE     | INVERTER/CHARGER | BATTERY          | WIND TURBINE |
| Power (W)             | 2500             | 2500             | 24V @ 900Ah      | 1000         |
| Space Required (m)    | 20m <sup>2</sup> | 1 x 0.6 x 0.45   | 2.5 x 0.4 x 0.35 | 1.8 m x 15m  |
| Weight (kg)           | 1150             |                  |                  |              |
| Quantity              | 10               | 1                | 24               | 1            |
| DC Output Voltage (V) | 30.5             | 24               | 24               | 24           |

### Technical Information

| Product Name                            | Remote Tele 2         | Remote Tele 3 | Remote Tele 6 |
|---|-----------------------|---------------|---------------|
| Part #                                  | STSOGT-2              | STSOGT-3      | STSOGT-6      |
| System Size                             | 2kW                   | 3kW           | 6kW           |
| # of Modules                            | 8                     | 12            | 24            |
| Inverter Size (kW)                      | 2                     | 3             | 6             |
| PV Wire Harness 4mm/20m                 | 4                     | 8             | 16            |
| Grounding Lugs                          | 8                     | 12            | 24            |
| PV Module Orientation                   | Landscape or Portrait |               |               |
| PV Array Surface Area (m <sup>2</sup> ) | 16                    | 24            | 48            |
| PV Array Weight (kg)                    | 200                   | 295           | 600           |
| Battery Bank                            | 24V 450Ah             | 48V 400Ah     | 48V 800Ah     |
| AC Output                               | 120v/230V             | 120v/230V     | 120v/230V     |

# Portable Solar

## SOLAR UFO

2 WATT



## SOLAR Cell Mate

5 WATT

### Product Details

The solar Cell Mate is an ultra portable 5 Watt solar battery solution designed for those needing power for their mobile devices. Perfect for the active hiker or backpacker who wants to stay powered up.

### Typical Applications

- Mobile Phones
- Tablets
- MP3 Players
- Cameras
- Small electronic gadgets

### Product Details

The solar UFO is the smallest portable solar, battery, and light combination offered from Symtech Solar. Its super compact and packable design make it easy to carry for both camping and quick backup lighting situations. Makes a great gift!

### Features & Benefits

- Portable solar, battery, light combination
- 12 compact LED bulbs
- NI-MH rechargeable batteries (replaceable)
- Out of this world design
- Hangable eye hook design

### Typical Applications

- Emergency lighting
- Camping
- Camps and patios
- Parties
- Outdoor events

### Features & Benefits

- Portable solar and battery combination
- 50Wh Li-Ion Polymer battery capacity
- Dual USB output
- Water resistant solar module
- Auto sync from solar and battery

### Technical Information

| Product Name           | SOLAR CELL MATE  |                 |
|------------------------|------------------|-----------------|
| Part # STSP-5CH        | SOLAR MODULE     | BATTERY         |
| Power (W)              | 5                | 5000mAh         |
| Size (mm)              | 204 x 282 x 12.5 | 125 x 70 x 15.6 |
| Weight (g)             | 300              | 200             |
| Charge Time (hrs)      |                  | 3 - 5           |
| DC Output Voltage (V)  | 5.5              | 5               |
| DC Output Current (mA) | 910              | 2               |

### Technical Information

| Product Name           | SOLAR UFO    |          |            |
|------------------------|--------------|----------|------------|
| Part # STSP-2L         | SOLAR MODULE | BATTERY  | LED LIGHTS |
| Power (W)              | 2            | 1200mAh  | 1.5        |
| Size (mm)              |              | 11.5 x 3 |            |
| Weight (g)             |              | 200      |            |
| Charge Time (hrs)      |              | 3-5      |            |
| DC Output Voltage (V)  | 3            | 2.4      | N/A        |
| DC Output Current (mA) | 660          | 1200     | N/A        |



Available in green and orange colors



Available in white color





# Portable Solar

## SOLAR Smart Light

8 WATT

### Product Details

The SOLAR Smart Light from Symtech offers a fast, simple and economic solution for those looking for an off-grid and simple to install lighting unit. Perfect for mounting on patios, campers, sheds, or any shelter without electricity.

### Features & Benefits

- Lightweight design
- Ergonomic and portable
- Adjustable angle bracket
- Phone charging outlet with wire
- Pull on/off switch

### Typical Applications

- 2nd Homes
- Camps and sheds
- Rural off-grid communities
- Emergency lighting
- General lighting and phone charging

### Technical Information

| Product Name          | SOLAR SMART LIGHT |         |   |
|-----------------------|-------------------|---------|---|
| Part # STSP-8L        | SOLAR MODULE      | BATTERY | ADDITIONAL ACCESSORIES  |
| Power (W)             | 8                 | 29Wh    | <ul style="list-style-type: none"> <li>• 3 Watt SMD LED</li> <li>• Rechargeable L-Ion</li> <li>• Wiring Cable (5m)</li> </ul> |
| Size (mm)             | 380 x 220 x 165   |         |   |
| Weight (kg)           | 2                 |         |   |
| Charge Time (hrs)     | 8                 |         |   |
| DC Output Voltage (V) | 6                 | 3.7     |   |
| DC Output Current (A) | 1.3               | 8       |   |



Available in white or black color

## SOLAR Base Camp

15 WATT

### Product Details

The SOLAR Base Camp system from Symtech offers a simple and economic solution for off-grid lighting. This kit comes complete with solar panel, battery, charging unit, wires and 4 bulb & sockets. This portable kit can be set up for use in minutes.

### Typical Applications

- Rural off-grid communities
- 2nd Homes
- Camps and sheds
- Emergency lighting
- General lighting and phone charging

### Features & Benefits

- Sealed Lead Acid Battery
- Ergonomic for portability
- 4 LED lights with sockets
- Mobile phone charging capability
- Multiple plug adaptors

### Technical Information

| Product Name          | SOLAR BASE CAMP |         |   |
|-----------------------|-----------------|---------|---|
| Part # STSP-15L       | SOLAR MODULE    | BATTERY | ADDITIONAL ACCESSORIES  |
| Power (W)             | 15              | 90Wh    | <ul style="list-style-type: none"> <li>• 4 LED Lights 2 Watts</li> <li>• Accessory Cable</li> <li>• Wiring Cable</li> </ul> |
| Size (mm)             | 405 x 345 x 131 |         |   |
| Weight (kg)           | 7.9             |         |   |
| Charge Time (hrs)     |                 |         |   |
| DC Output Voltage (V) | 17              | 12      |   |
| DC Output Current (A) | 0.58            | 7       |   |



Available in white color

# Portable Solar

## SOLAR Flex Mate

20 WATT



## SOLAR Mobile Mate

20 WATT

### Product Details

The SOLAR Mobile Mate is a 20 Watt foldable solar battery solution designed around the active lifestyle or those looking for power in a plug free environment. Great on the go power supply for taking to the park or on your next outdoor adventure. SOLAR Mobile Mate is quick and easy to setup and use for a variety of different mobile applications.

### Typical Applications

- Computers
- Mobile phones
- Cameras
- MP3/MP4 Players
- PDA's

### Product Details

The SOLAR Flex Mate 20 Watt foldable solar battery solution is a simple and convenient portable power supply for on the go people or those looking to keep their mobile electronic devices powered up. A 20 Watt monocrystalline PV module easily connects to the Li-Ion battery pack for charging your favorite electronic gadget.

### Features & Benefits

- Portable solar and battery combination
- 60Wh Li-Ion battery capacity
- USB compatible
- Indicator LED for charging
- Adjustable output voltage

### Typical Applications

- Computers
- Mobile phones
- Cameras
- MP3/MP4 Players
- PDA's

### Features & Benefits

- Portable solar and battery combination
- 60Wh Li-Ion battery capacity
- USB compatible
- Indicator LED for charging
- Adjustable output voltage

### Technical Information

| Product Name          | SOLAR FLEX MATE           |                               | BATTERY       |
|-----------------------|---------------------------|-------------------------------|---------------|
| Part # STSP-20F       | SOLAR MODULE              |                               |               |
| Power (W)             | 20                        |                               | 60Wh          |
| Size (mm)             | 835 x 275 x 15 (unfolded) | 210 x 275 x 45 (folded)       | 170 x 85 x 25 |
| Weight (g)            | 950                       |                               | 420           |
| Charge Time (hrs)     |                           |                               | 3 - 5         |
| DC Output Voltage (V) | 12                        | Selectable 8.4 - 12 - 16 - 19 |               |

| Product Name          | SOLAR MOBILE MATE       |                               | BATTERY       |
|-----------------------|-------------------------|-------------------------------|---------------|
| Part # STSP-20B       | SOLAR MODULE            |                               |               |
| Power (W)             | 20                      |                               | 60Wh          |
| Size (mm)             | 200 x 290 x 50 (folded) | 400 x 620 x 35 (unfolded)     | 170 x 85 x 25 |
| Weight (g)            | 950                     |                               | 420           |
| Charge Time (hrs)     |                         |                               | 3 - 5         |
| DC Output Voltage (V) | 12                      | Selectable 8.4 - 12 - 16 - 19 |               |



Available in black color



Available in black color



# Portable Solar

## SOLAR Vehicle Mate 100 WATT



### Product Details

The solar vehicle mate is designed with the motorist in mind. Simple suitcase design with an integrated mounting bracket and easy to carry handle makes charging your vehicles battery that much easier. Built in charge controller with convenient crocodile and cigar lighter adapter included.

### Features & Benefits

- Lightweight design
- Ergonomic for portability
- Adjustable angle bracket
- Indicator LED for charging
- Multiple plug adaptors

### Typical Applications

- Cars & Trucks
- RV's
- Boats
- Small Camps
- 12 Volt battery banks

### Technical Information

| Product Name          | SOLAR VEHICLE MATE                             |                   |
|-----------------------|--|-------------------|
| Part # STSP-100A      | SOLAR MODULE                                   | CHARGE CONTROLLER |
| Power (W)             | 100  | 100               |
| Size (mm)             | 664 x 668 x 70                                 |                   |
| Weight (kg)           | 8  |                   |
| Charge Time (hrs)     | 2 or more hours depending on battery (Ah) size |                   |
| DC Output Voltage (V) | 18   | 14.7              |
| DC Output Current (A) | 5.55   |                   |



## SOLAR Remote Freezer 0.25kW

### Product Details

The Remote Freezer system from Symtech Solar is a turnkey freezer (165 liter) kit perfect for remote cabins or areas without access to the grid. Chest style freezers are easy to clean and optimize with a thick insulation and a refrigeration system designed for solar PV applications. Freezer Kit includes everything required to set up and begin use in less than one hour.

### Typical Applications

- Second homes
- Camps and cabins
- Remote island communities
- Off-grid medical storage
- Perishables

### Features & Benefits

- Quick installation & cost effective
- Energy efficient design (R-134a refrigerant)
- Lockable lid
- Adjustable thermostat
- Ample solar and battery back up

### Technical Information

| Product Name          | SOLAR REMOTE FREEZER |                   |                 |                  |
|-----------------------|----------------------|-------------------|-----------------|------------------|
| Part # STSP-2-24      | SOLAR MODULE         | CHARGE CONTROLLER | BATTERY         | FREEZER          |
|                       | 250                  | 520Wh             | 200Ah           | 168Whs           |
| Size (mm)             | 1650 x 992 x 40      | 170 x 120 x 85    | 322 x 178 x 225 | 1000 x 750 x 950 |
| Weight (kg)           | 273                  |                   |                 |                  |
| Quantity              | 1                    | 1                 | 2               | 1                |
| DC Output Voltage (V) | 30.5                 | 24                | 24              | 24               |
| DC Output Current (A) | 8.2                  | 20                | 200             | 23 Ah/day        |



# BOS Components

## PV Solutions Components

Symtech offer some of the most common solar energy components used for the installation of residential and light commercial solar projects for both on and off-grid systems. All components comply with the relevant local codes and standards.

If you require a component that is not shown in this catalogue, please contact our sales staff, who will happily assist you with your enquiry.



## Options

The protection and isolation of DC circuits is a critical part of the overall PV system. There are a number of options available for installers, depending on an array of factors including:

- System size (module, string and inverter)
- Site layout (rooftop, ground mount, BIPV)
- System design (local code requirements)
- Visual aesthetics (component placement)

## AC Disconnect

| Part Number          | STS-AC-16     | STS-AC-25 |
|----------------------|---------------|-----------|
| Max AC Voltage (VAC) | 415           | 415       |
| Max AC Current (A)   | 16            | 25        |
| Rating               | IP65          |           |
| Size (mm)            | 118 x 84 x 10 |           |

## Features

- Large pad lockable red/yellow or grey/black handle
- High breaking capacity with 12.5 mm contact air gap
- Compact and suitable where space is limited
- Highly visible red/yellow handle

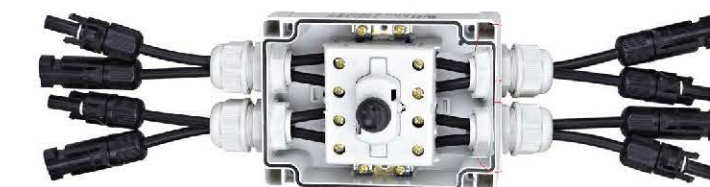


## Dual DC Disconnect

| Part Number          | STS-DCCT-20   | STS-DCCT-32 |
|----------------------|---------------|-------------|
| Max AC Voltage (VAC) | 1000          | 1000        |
| Max AC Current (A)   | 20            | 32          |
| Rating               | IP65          |             |
| Size (mm)            | 118 x 84 x 10 |             |

## Features

- Large pad lockable in yellow w/red or grey w/black handle
- Optional MC4 connectors
- Compact and suitable where space is limited
- Flame retardant ROHS polycarbonate



## DC Disconnect

| Part Number          | STS-DC-16     | STS-DC-25 |
|----------------------|---------------|-----------|
| Max DC Voltage (VDC) | 1000          | 1000      |
| Max DC Current (A)   | 16            | 25        |
| Rating               | IP65          |           |
| Size (mm)            | 118 x 84 x 10 |           |

## Features

- Large pad lockable in yellow w/red or grey w/black handle
- Optional MC4 connectors
- Compact and suitable where space is limited



## AC/DC Disconnect With Surge Protection

| Part Number     | STS-ACDC-25    |        |
|-----------------|----------------|--------|
| Max Voltage (V) | 230AC          | 1000DC |
| Max Current (A) | 15AC           | 16DC   |
| Rating          | IP65           |        |
| Size (mm)       | 200 x 200 x 98 |        |

## Features

- AC/DC integrated switch
- IP66 UV stabilized
- Independent lockable lids
- SSPD surge protection



# BOS Components



## PV Solutions Components

MC4 solar connectors and accessories provide a fast and reliable connection for Solar energy projects up to 1000VDC, and are easily crimped and assembled with dedicated MC4 crimping tools.

If you require a component that is not shown in this catalogue, please contact our sales staff, who will happily assist you with your enquiry.

### MC4 Connectors (pairs)

| Part Number          | STS-MC4-30 | STS-MC4-43 |
|----------------------|------------|------------|
| Max AC Voltage (VAC) | 1000       | 1000       |
| Max AC Current (A)   | 30         | 43         |
| Cable Size Diameter  | 4mm        | 6mm        |
| Rating               | IP67       |            |
| Resistance (mΩ)      | 0.5        |            |

### Features

- Over molded design w/ fast and easy crimp assembly
- Certified to TUV & UL standards
- Mechanical lock and release clip design
- Waterproof IP67 rating

### MC4 Branch Connectors

| Part Number          | STS-MC4B-M | STS-MC4B-F |
|----------------------|------------|------------|
| Max DC Voltage (VDC) | 1000       | 1000       |
| Max DC Current (A)   | 30         | 30         |
| Cable Size Diameter  | 4mm        | 6mm        |
| Rating               | IP67       |            |

### Features

- Over molded design
- Certified to TUV & UL standards
- Simple plug and play design
- Waterproof IP67 rating



### Home Runs (Wiring Harness)

| Part Number          | STS-PVWH-20            | STS-PVWH-25            |
|----------------------|------------------------|------------------------|
| Max AC Voltage (VAC) | 1000                   | 1000                   |
| Max AC Current (A)   | 20                     | 32                     |
| Resistance (Ω/km)    | 4.75                   |                        |
| Size (L x W)         | 20m x 4mm <sup>2</sup> | 25m x 4mm <sup>2</sup> |

### Features

- Robust, flexible and space-saving design
- UV resistant
- Flame retardant insulation
- Black, red, or blue colors available

### Solar Wire

| Part Number       | STS-PVW4-100            | STS-PVW6-100            |
|-------------------|-------------------------|-------------------------|
| Max Voltage (V)   | 1000                    | 1000                    |
| Max Current (A)   | 55                      | 70                      |
| Resistance (Ω/km) | 4.75                    | 3.39                    |
| Size (L x W)      | 100m x 4mm <sup>2</sup> | 100m x 6mm <sup>2</sup> |

### Features

- Flame retardant insulation
- Robust, flexible and space-saving design
- Highly temperature resistant
- Black, red, or blue colors available

## Design Criteria

Pre-assembled wire harnesses are a quick and easy alternative to crimping your own connections in the field. Pre-assembled MC4- harnesses can minimize the risk of faulty and unsafe connections, as well as reducing the installation time of a project.

Custom lengths and sizes upon request based on:

- Wire length (m)
- Wire size (mm<sup>2</sup>)
- Wire Color





# LED Lighting

## Smart Home & Building

LED lighting technology is a great way to reduce your energy costs and decrease energy consumption. Getting into the green revolution has never been easier. Create instant savings with the help of some of the most convenient replacement style bulbs available.

### Features

- Long life (up to 50,000 hours)
- Energy efficient
- Free of toxic chemicals
- Durable and shock resistant
- Low temperature output
- Save 80-90% on energy consumption

### LED Bulb

| Part Number        | STSGLED-3B          | STSGLED-5B | STSGLED-7B |
|--------------------|---------------------|------------|------------|
| Watts              | 3                   | 5          | 7          |
| Luminous Flux (lm) | 220                 | 330        | 500        |
| Color Temp         | Warm White 3000k    |            |            |
| Voltage            | 120V - 240V/50-60hz |            |            |
| Size (mm)          | 50 x 97             |            |            |
| Lifespan           | > 30,000 hrs        |            |            |



### LED Spot Light

| Part Number        | STSGLED-1S              | STSGLED-3S |
|--------------------|-------------------------|------------|
| Watts              | 1                       | 3          |
| Luminous Flux (lm) | 60                      | 200        |
| Color Temp         | Warm White 2700 - 3100k |            |
| Voltage            | 120V - 240V/50-60hz     |            |
| Size (mm)          | 60 x 113                |            |
| Lifespan           | > 30,000 hrs            |            |



### LED Tube

| Part Number | STSGLED-T8          | STSGLED-T14 | STSGLED-T16 | STSGLED-T18 |
|-------------|---------------------|-------------|-------------|-------------|
| Watts       | 8                   | 14          | 16          | 18          |
| Color Temp  | Warm White 3100k    |             |             |             |
| Voltage     | 120V - 240V/50-60hz |             |             |             |
| Size (mm)   | 26 x 1200           |             |             |             |
| Lifespan    | > 50,000 hrs        |             |             |             |



### LED High Bay

| Part Number | STSGLED-30H         | STSGLED-50H | STSGLED-80H |
|-------------|---------------------|-------------|-------------|
| Watts       | 30                  | 50          | 80          |
| Color Temp  | 2600 - 7500k        |             |             |
| Voltage     | 120V - 240V/50-60hz |             |             |
| Size (mm)   | 60 x 113            |             |             |
| Lifespan    | > 50,000 hrs        |             |             |

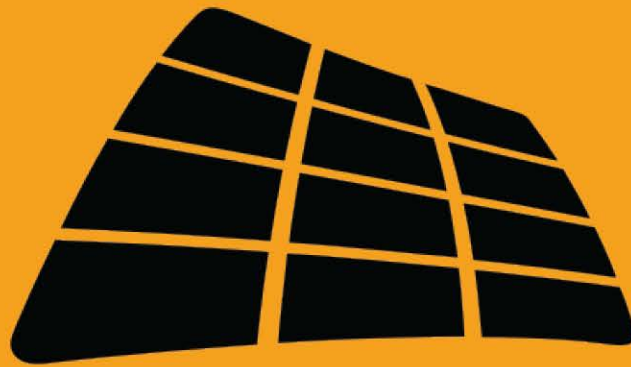


## Energy Savings

Using LEDs in light fixtures creates more direct and efficient illumination associated to the way LEDs produce light. LEDs send light in specific directions as CFLs and incandescent lights produce both heat and light in every direction.

LED bulbs can have a 50% savings on light loss in recessed lighting fixtures compared with CFLs or incandescent bulbs.





[www.symtechsolar.com](http://www.symtechsolar.com)